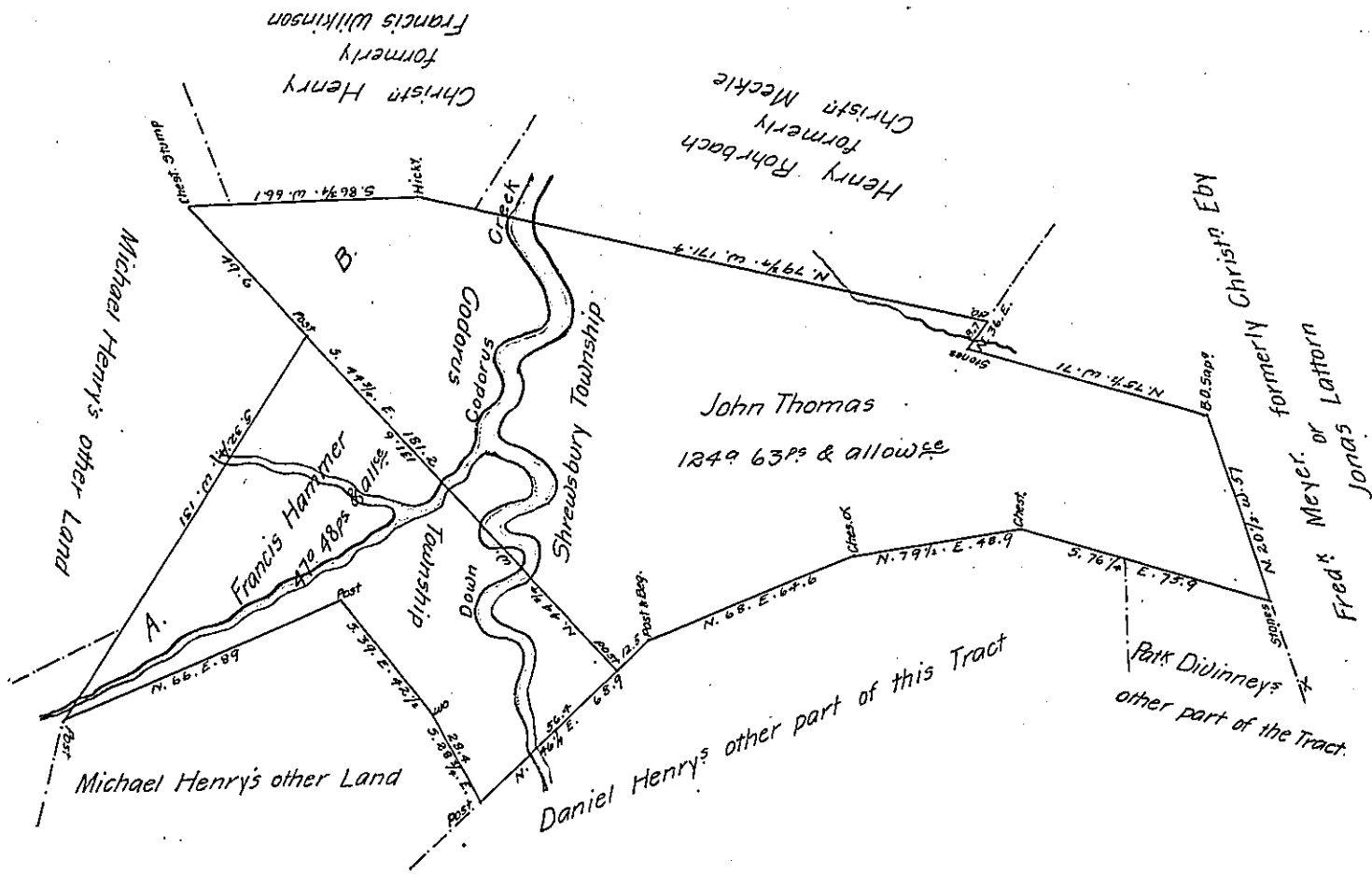


Situate in Shrewsbury & Godorus Townships, in York County, Containing in the whole 171 Acres & 111 perches and the usual allowance.



The part A contains 47a. 48ps. and allowance; and is a part of a larger tract of 106a. 15ps. & of land, Originally Surveyed by Wm. Matthews late D.S. on the 21st. of the 9th. mo. 1773 in pursuance of a Warrant bearing date the 1st. day of June 1749 granted to Francis Hammer. The part B contains 124a. 63ps. & allowance; and is also a part of a larger tract of 182a. 56ps. & of land, originally Surveyed by Wm. Matthews late D.S. on the the 12th. of the 4th. mo. 1774, in pursuance of a Warrant bearing date the 28th. day of march 1774, granted to John Thomas for 150a.

Resurveyed and divided off from the said larger tracts, on the 24th. and 25th. days of February 1808 - And now, after having been Separately examined Corrected & Calculated, the parts A. and B. (making the whole draught) are, at the request of the present owner Michael Henry, returned for Confirmation, the 25th. day of August A.D. 1809.

To Andrew Porter Esquire
Surveyor General
Lancaster Pa.

per
Jacob Spangler D.S.

N. B. It is Probable the Tract of which A is a part may be returned in the name of John Thomas.

IN TESTIMONY that the above is a copy of the original remaining on file in the Department of Internal Affairs of Pennsylvania, made conformably to an Act of Assembly approved the 16th day of February, 1833, I have hereunto set my Hand and caused the Seal of said Department to be affixed at Harrisburg, this

ninth day of October 1905

Jacob R. Brown
Secretary of Internal Affairs.